

FOURWAY

AUTOMATIC Parts & Tooling Company Inc.

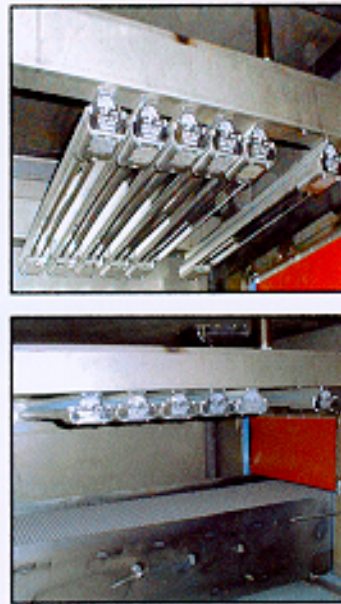
Serving the cleaning industry for over 35 years

Parts Drying System

"Ask the Guy that has one!"

New! Conveyor Parts Dryer

The "Original" Automatic Parts Washer



Ideal for large and odd shaped parts manufactured by
cold formers, cnc's stamping, ect...

Fourway's Conveyor Dryers are an essential tool in achieving clean parts. It's not always enough to clean your parts, often times parts can become stained after they are cleaned and water marks are left behind. Fourway dryers can eliminate this problem before it begins.

The 1210 C.F.M. blower and infrared heaters heat the air to your desired temperature. The variable speed drive allows you to control the amount of time the parts are exposed to the heat. Therefore Fourway dryer's are able to dry a large variety of parts.

A double wall with 1" thick insulation Helps maintain the interior temperature and contain the heat to minimize electrical consumption.

For an ideal cleaning system combine a Fourway washer with a Fourway Dryer for unsurpassed cleaning results.

Call 1-800-FOURWAY or (517) 782-9371
for a solution to cleaner and dryer parts

General Specifications

- *Carbon Steel Body.
- *Galvanized Belt
 - 18" wide (B-50 & B-100)
 - 24" wide (B-200)
- *1/2 hp Cylinder Drive Motor
- *Infrared Heat with Thermostat
- *Insulated Body
- *1210 C.F.M. Forced Air Blower
- *Adjustable legs with Swivel Pads

Options Available

- *Stainless Steel Components
- *Wire Mesh Belting
- *NEW Special Plastic belting available; ask for details
- *Special build to customers needs

FOURWAY AUTOMATIC Parts & Tooling Company Inc.

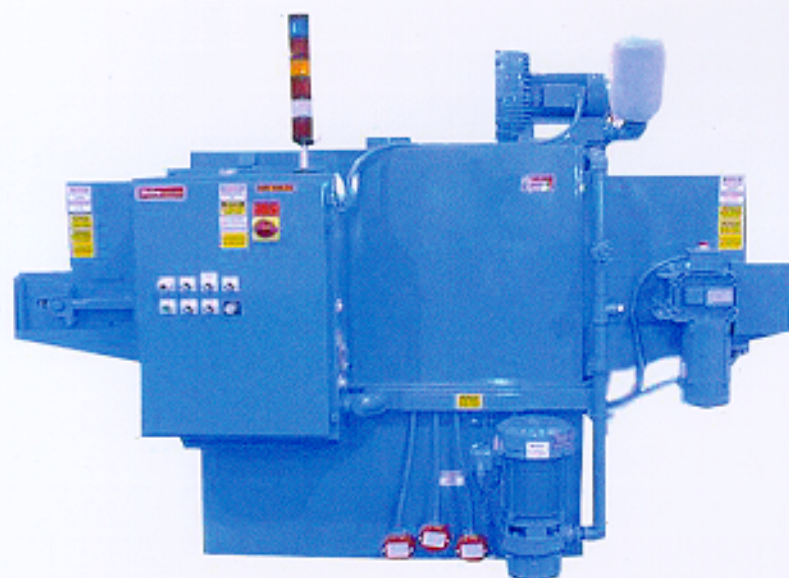
Serving the cleaning industry for over 35 years

Parts Cleaning Systems

"Ask the Guy that has one!"

New! Conveyor Parts Washers

The "Original" Automatic Parts Washer



Ideal for large and odd shaped parts manufactured by cold formers,
cnc's stamping, ect...
Also good for smaller parts in baskets

We make three different size models. The B-50 is our compact unit and fits small manufacturing houses and "cell concepts" where space saving is a factor. The B-100 is our mid size unit ideal for small to medium shops. The B-200 is our largest unit ideal for larger parts.

The conveyor unit achieves clean parts by intensely blasting streams of solvents or cold and hot water based cleaners from several angles, above, below, and from the sides. The cleaning solution blasts the parts as they travel along the conveyor removing chips, oil and dirt.

To determine which unit best fits your cleaning applications consult with a Fourway representative at (800) FOURWAY.

General Specifications

- *Carbon Steel Body.
- *Galvanized Belt
 - 18" wide (B-50 & B-100)
 - 24" wide (B-200)
- *1/2 hp Cylinder Drive Motor
- *Pump
 - 3 hp, 120 gpm (B-200)
- *Tank Capacity
 - 110 Gallons (B-50)
 - 180 Gallons (B-100)
 - 180 Gallons (B-200)

Options Available

- *Hot Water Systems.
- *Automatic fill and Solution Mixing.
- *5 hp Pump.
- *Oil Skimmer.
- *Inline Filter.
- *Stainless Steel Components
- *Wire Mesh Belting
- *Regenerative Blowoff
- *Gravity, Vibratory and Conveyorized Loading Chutes
- *NEW Special Plastic belting available; ask for details
- *Special build to customers needs

FOURWAY

Automatic Parts & Tooling Company Inc.

Serving the cleaning industry for over 35 years

Parts Cleaning Systems

"Ask the Guy that has one!"

Vibratory Loading Chute

The "Original" Automatic Parts Washer



Provides a "consistent feed" for best cleaning results

Our Vibratory Loading Chutes are air operated. Parts are loaded into the perforated screen loading area. 3-4 pans may be loaded at one time. As air pressure is applied, the parts start a downward sliding motion. The rate of feed can be regulated by an increase in air pressure or by changing the angle of the loader. As the parts progress downward, oil and chips are removed through the perforated screen into a holding area. The parts then enter the guide chute and the wash unit at an even flow for maximum cleaning results.

To determine which unit best fits your cleaning applications consult with a Fourway representative at (800) FOURWAY.

General Specifications

- *Carbon Steel Body.
- *Rubber Mounts, for smooth quiet operation
- *Large loading area
- *Chip Cart on wheels, for removal of chips and oil
- *Air shut off and regulator, to adjust parts feed
- *Hopper, to direct chips and oil into chip cart



UTOMATICS Parts and Tooling Inc.

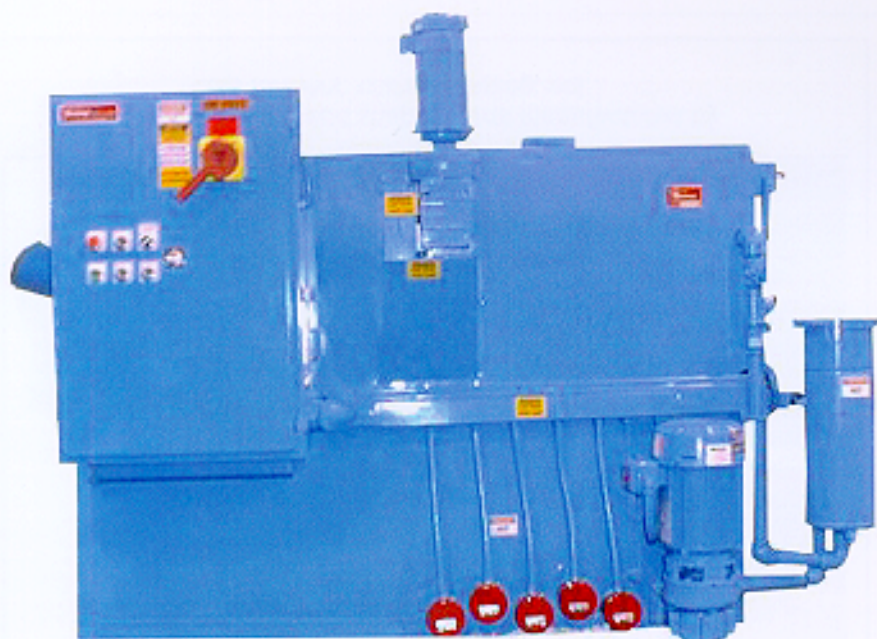
Serving the cleaning industry for over 35 years

Parts Cleaning Systems

"Ask the Guy that has one!"

New! Auger Parts Washers

The "Original" Automatic Parts Washer



Ideal for cleaning parts manufactured by Screw Machines, Cold Formers, CNC's, Stamping, ect.

We make three different size models. The B-50 is our compact unit and fits small manufacturing houses and "cell concepts" where space saving is a factor. The B-100 is our mid size unit ideal for small to medium shops. The B-200 is our largest unit ideal for larger parts.

The auger unit provides flow through cleaning using solvents or cold and hot water based cleaners. The cleaning solution flushes the parts as they rotate gently through the cylinder removing chips, oil and dirt from blind holes, through holes threaded parts.

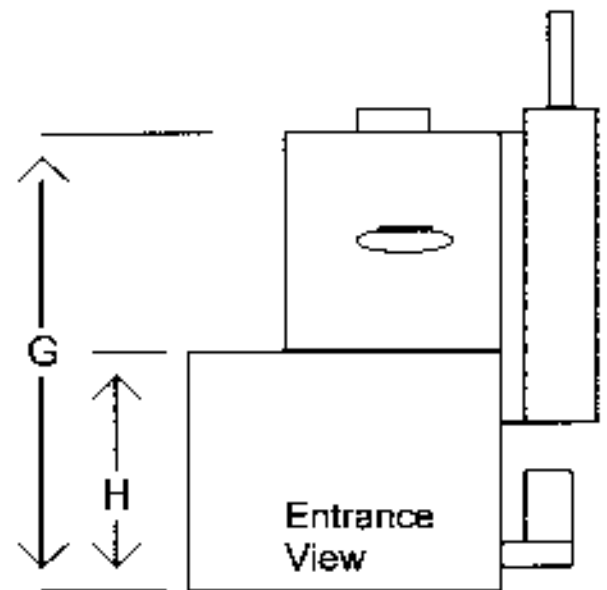
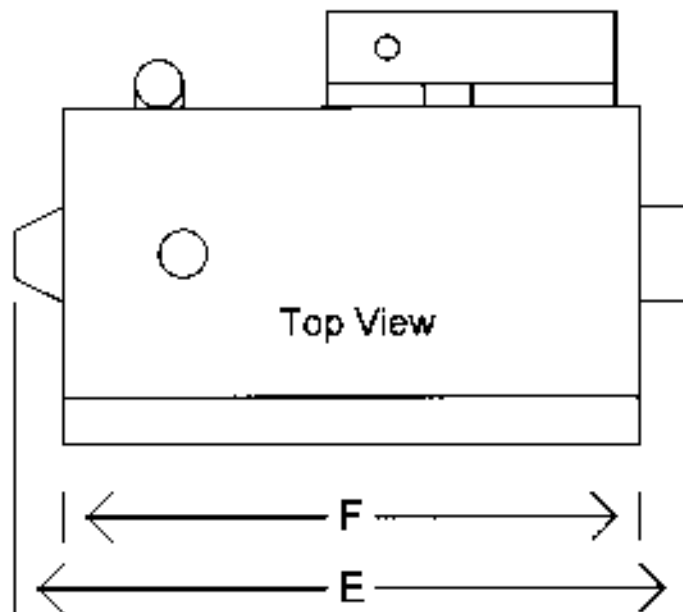
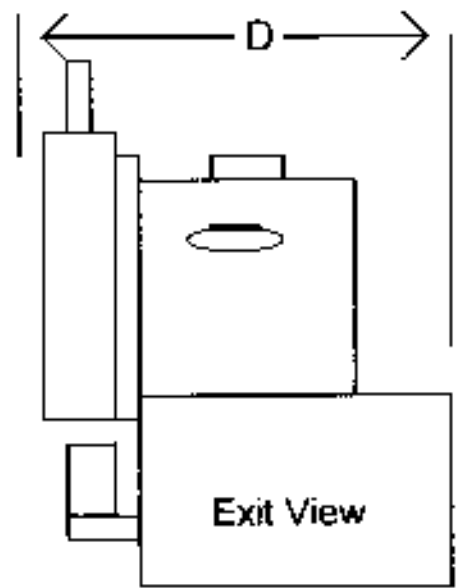
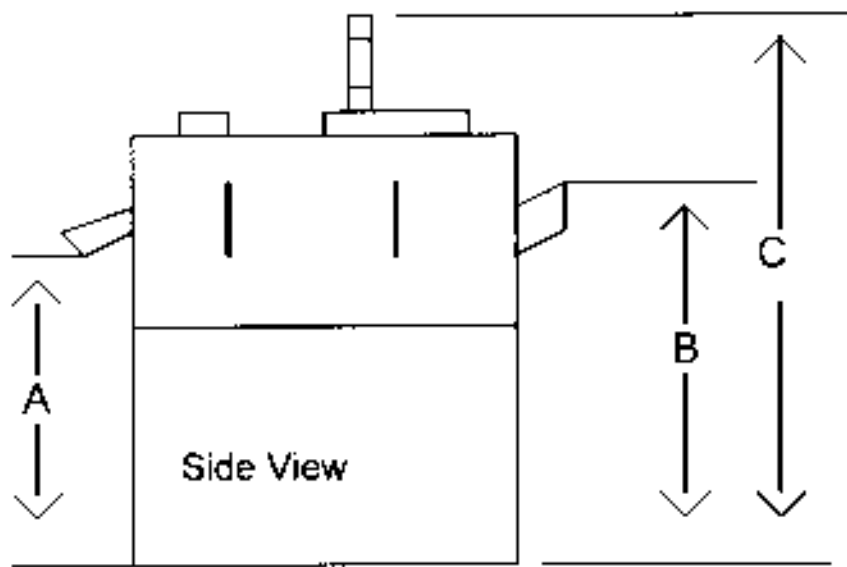
To determine which unit best fits your cleaning applications consult with a Fourway representative at (800) FOURWAY.

General Specifications

- *Carbon Steel Body.
- *Cylinder, 5/16 x 1" Expanded Metal
 - 16" Diameter (B-50 & B-100)
 - 24" Diameter (B-200)
- *1/3 hp Cylinder Drive Motor
- *Pump
 - 1/2 hp, 70 gpm (B-50 & B-100)
 - 3 hp, 120 gpm (B-200)
- *Tank Capacity (Gallons).
 - 110 Gallons (B-50)
 - 180 Gallons (B-100)
 - 180 Gallons (B-200)

Options Available

- *Hot Water Systems.
- *Automatic Fill and Solution Mixing.
- *Variable Speed Cylinder Drive
- *3 & 5 hp Pumps.
- *Oil Skimmer.
- *Inline Filter.
- *Submersing Type Cylinder.
- *Stainless Steel Components
- *Gravity, Vibratory and Conveyorized Loading Chutes
- *special build to customers needs



MODEL	A	B	C	D	E	F	G	H	GAL
B-50	22.5"	39.25"	79"	47"	71"	51"	51.25"	27"	110
B-100	22.5"	39.5"	78.5"	48"	92"	72"	54.25"	27"	180
B-200	22.5"	41.5"	78.5"	51.25"	94.25"	72"	59.75"	28.25"	200

Fourway Automatics Auger Type Parts Washer



Fourway Automatic Parts and Tooling, Inc.

3215 Gregory Road
517/783-2768

Jackson, Michigan 49202
Fax: 517/782-0021

GUARANTEE

Equipment sold by Fourway Automatic Parts and Tooling Company, Inc., has a thirty day unconditional money back guarantee should the equipment be found mechanically unsatisfactory.

To receive a full refund, the equipment must be returned freight prepaid, within thirty days from the date of receipt of the shipment. The buyer is responsible for returning the equipment in the same condition as received.

Warranty

All parts purchased from outside vendors carry the manufacturers' warranties. These warranties are usually one year, but may vary from vendor to vendor. All other parts supplied by Fourway carry a one year warranty. Parts being replaced under warranty must be returned in the same condition as received. Parts disassembled or altered in any way void the manufacturers' warranties.

NOTE: Washers built especially for specific use designed and specified by the Customer that are not standard machines, have a minimum 25% restocking charge, and in certain cases may not be returnable. Please consult with your salesman on terms and conditions concerning your purchase.

F.A.Q's

Frequently Ask Questions about Parts Washing Systems.

(Q) What is cold and hot wash?

(a) Cold wash uses a solvent such as mineral spirits (without a heating source) to desolve cutting oils, and to remove chips and dirt from parts. Parts will be "wet" and will air dry leaving some oil on the part to aid in rust protection.

(a) Hot water wash systems (also known as aqueous systems) use either electric or gas heat to elevate the water temperature to approximately 160 deg. The use of a chemical cleaner will remove cutting oils, water soluble fluids, chips and dirt. Parts will be "damp" when they exit the machine but, because heat is built up in the parts they will "flash" dry within a short period.

(Q) How does water clean my parts?

(a) A simple way to understand how a hot water system works is it's works similar to washing dishes at home. Washing dishes that have spaghetti sauce on them (containing grease from the meat) in cold water without dish soap is very difficult; you just "smear" the grease around on the plate, but when you add the elements of hot water and dish soap it changes the cleaning process. Hot water loosens the grease and dish soap breaks down the grease and dirt, therefore cleaning the plate. Also by using hot water the plate will air dry quickly. This is the same manner in which a hot water system cleans and dries the parts.

(Q) Won't steel parts rust using water to clean parts?

(a) No, most aqueous cleaners have a rust preventive in them leaving a protective coating that provides a minimum of 30 day rust protection.

(Q) Won't the cutting oils contaminate the cleaning solution?

(a) Use an aqueous cleaner that breaks out the oils from the cleaning solution. A belt skimmer can then be used to remove the tramp oils from the solution.

More Questions and Answers on the other side!

(Q) What about disposal of the cleaning solution?

(a) Most solvent type cleaners are hazardous waste and have tough permit regulations. Aqueous cleaners are an industrial waste which means less stringent requirements for permits and less cost for disposal, not to mention the cost savings for the aqueous cleaner over solvents.

(Q) Won't the Auger Machine damage outside threads and other surfaces?__

(a) No, a slow rotation processes the parts through the machine without damage to threads and other surfaces.

(Q) How well will it clean through and blind holes?

(a) By using what we call a submersing cylinder. The parts are submersed in the cleaning solution forcing the cleaning solution into blind holes and through holes flushing out chips, oils and dirt.

(Q) What size parts can be cleaned?

(a) The auger washers can clean parts as small as .093 up to 3" outside diameters and up to 8" long. The conveyor washers can clean parts up to 24" width and 12" height and lengths up to 36". Both machines can be built to accommodate most parts.

(Q) What quality products are used in our washers?

(a) Allen Bradley, Chromalox, Gusher / Ruthman, and Omron are just a few of the quality components used on our washers to guarantee that the washers will perform day after day. We stock most parts (excluding sheet metal components) so that replacements can be sent the same day to keep your parts washer working. There are some less expensive washers in the market place, but none compare to the Fourway quality. Our motto is "Ask the Guy that has One!" and it's true; you can ask any of our hundreds of customers how the washer performs for them.

(Q) We don't have a lot of extra floor space for a cleaning system; will the washer take up much floor space?

(a) No, our washers are very compact and take up very little floor space. In fact they make excellent "cell concept" units allowing you to complete your parts start to finish without leaving the area. But make no mistake, our wash systems handle your complete washing needs, large to small, size and quantities.